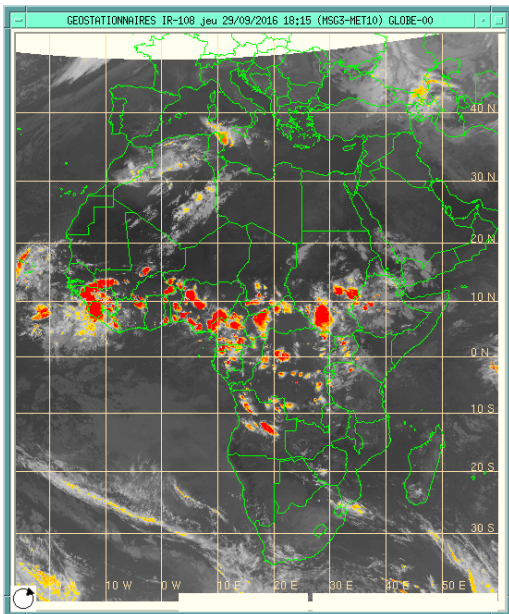


Heavy rains/Flash Flood Risk bulletin: PSN06-821

Issued: 30th September, Valid from: 01st to 03rd October 2016

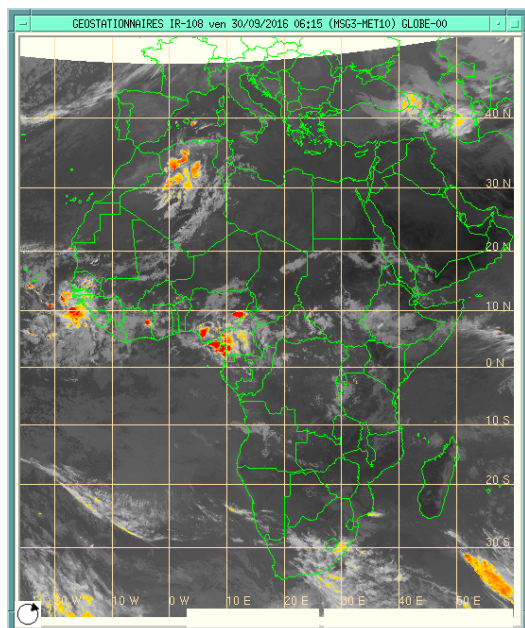
1. Observed weather: Highlight



Infra-red Image of 29th September 2016 at 18:15 UTC

Afternoon of 29th September, (Upper image):

Monsoon is still active on the extreme west of Africa (Guinea Bissau, Guinea, Sierra Leone and Liberia). Weather conditions have been favorable to local convections with moderate to heavy rains over Togo, Benin, southwest Niger, Nigeria, Cameroon, Gabon and CAR and DRC. To the east, the Southeasterly Trade wind is strong enough to generate rains in the center Ethiopia, Uganda and eastern DRC.



Infra-red Image of 30th September 2016 at 06:15 UTC

In the morning of 30th September, (Bottom image):

Rainy cells associated with upper level trough are observed over northeastern Algeria. The rainfall activities which were observed on the extreme west of Africa have moved to the Atlantic Ocean. Elsewhere, rainfall activities were dissipating during the night of 29/09/2016 except over southern/eastern Nigeria and southwestern Cameroon. Over South Africa, the approach of an anticyclone has pushed middle level clouds with light rainfall.

Rainfall amount at some meteorological stations for the last 72 hours (in millimeters)

Date	Station Country (RainfallAmount)	Station Country (RainfallAmount)	Station Country (RainfallAmount)	Station Country (RainfallAmount)
29 September	Mahdia Tunisia (138)	Diourbel Senegal (90)	Souanke Congo (40)	Koundara Guinea (29)
28 September	Conakry Guinea (57)	Adiake Cote d'Ivoire (55)	Zanzibar Tanzania (54)	Monastir-Skanes Nigeria (36)
27 September	Kete-Krachi Ghana (80)	Conakry Guinea (63)	Berberati CAR (61)	Makoua Congo (48)

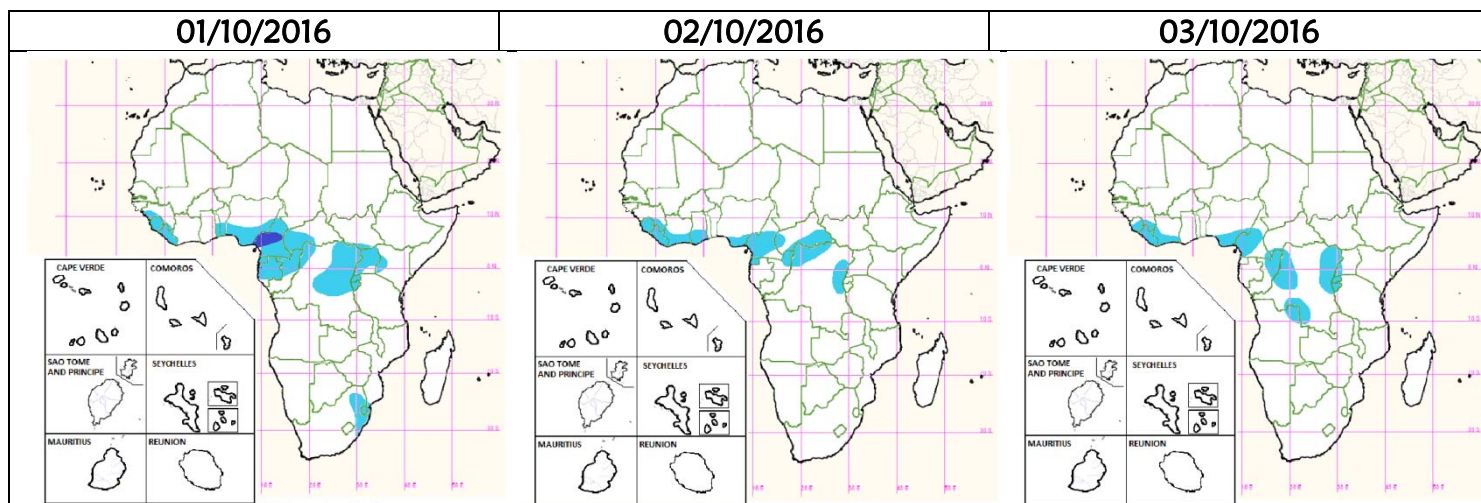
1. HEAVY RAINS/FLASH FLOOD RISK FORECAST VALID FOR THE NEXT THREE (03) DAYS.

High risk : Nil.

Medium risk: centre Cameroon

Low risk: Guinea, Sierra Leone, Liberia, southern Nigeria, southern Cameroun, Equatorial Guinea, Gabon, northern Congo, CAR, northern DRC, Rwanda, Burundi, Uganda and the eastern South Africa.

Color	Severity of risk
	Low
	Medium
	High



Our flood risk forecast concerns only rainfed floods that could be caused by heavy rains.

Source: Synthesis of:

1) *Dynamic of atmosphere by different global models (ECMWF, GFS, ARPEGE, UKMO).*

2) *Index of extreme events from ECMWF (http://www.ecmwf.int/products/forecasts/d/charts/medium/eps/efi/efi_tp/).*

3) *Occurrence probability of extreme precipitation from TIGGE project ensemble models (http://tparc.mri-jma.go.jp/TIGGE/tiqqe_extreme_prob.html), probability exceeding the 90th percentile [%]*

4) *MJO active phase.*

For more and detailed information, please visit our website: <http://www.acmad.org> and watch for the next issue of this bulletin.

You may call Office: +227 20 73 49 92 or Head of Forecast: Léon Guy Razafindrakoto : +227 90 23 67 33